

Procedure to Replace a Briskin Style Fuel Tank with a Tankcraft Style Fuel Tank

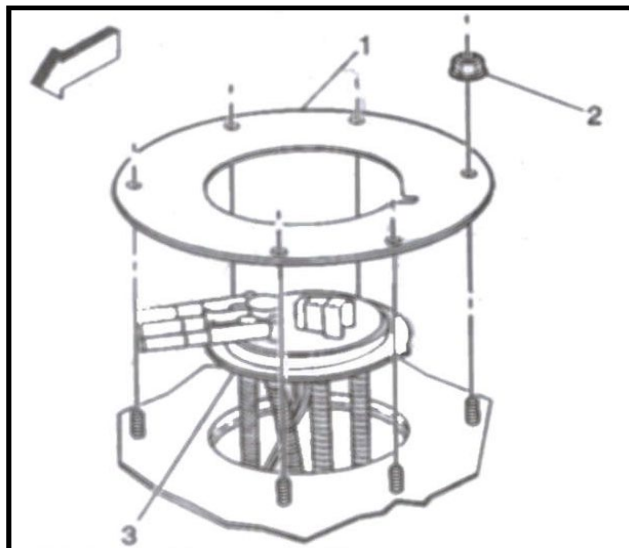
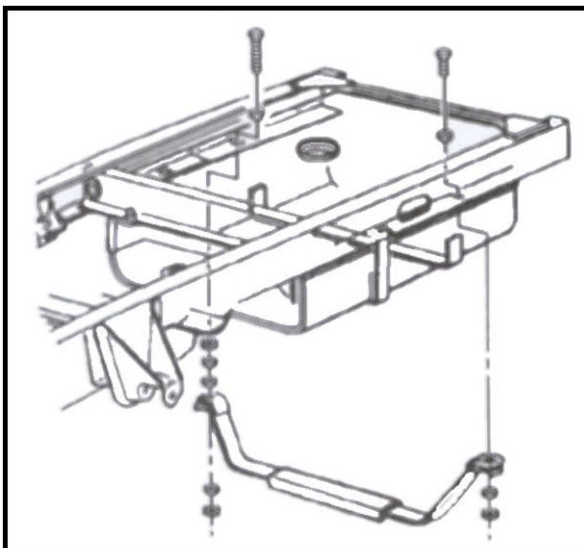
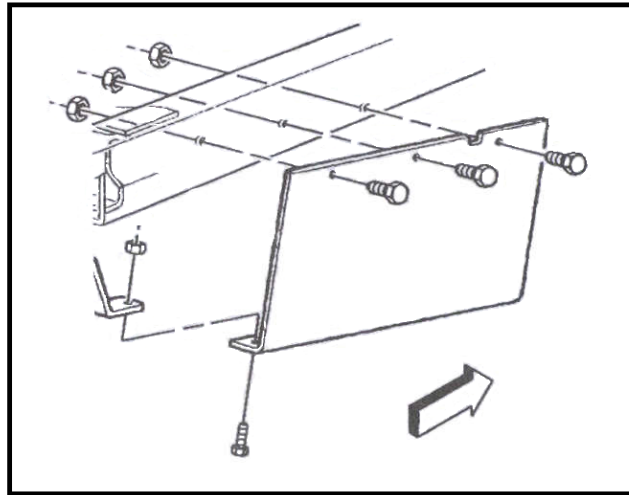
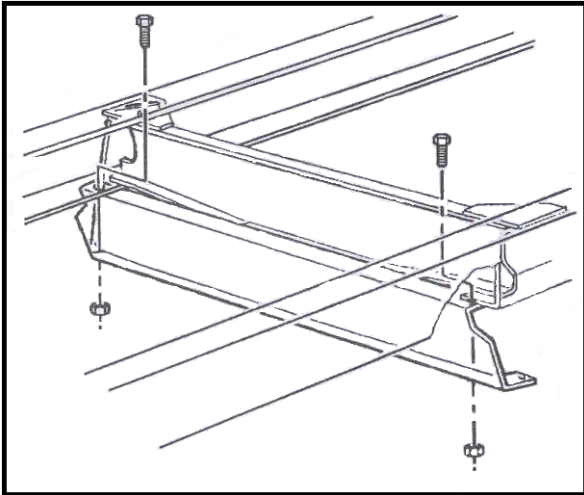
This document is to be read in conjunction with Workhorse chassis service manual (part number 15748848-2) for which page numbers are referenced in this document. If a more recent edition of the Workhorse chassis service manual is used the reader is to locate the correct reference page numbers for their edition of the manual.

The instruction covers different cases, select the case appropriate and follow only the instructions relating to that case.

CASE 1- P42 and P32 all Wheelbases 40 Gallon.

1. Disconnect battery negative cable and fuel filler neck connections. Remove fuel tank, disconnect fuel lines and electrical connector per service manual page 6-1627 & 6-1628.
2. Remove sender unit as per service manual page 6-1627 & 6-1628

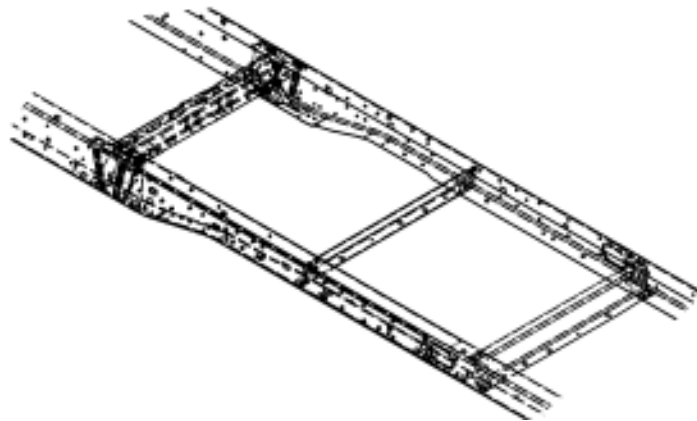
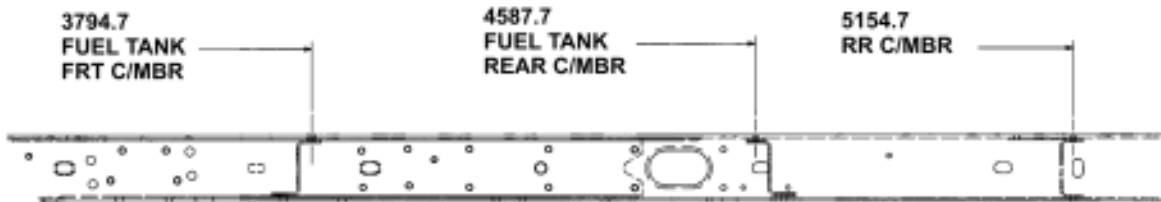
PICTURE 1



3. Remove existing cross-members immediately in front of and behind the fuel tank by removing rivets that attach these cross-members to the chassis rails.

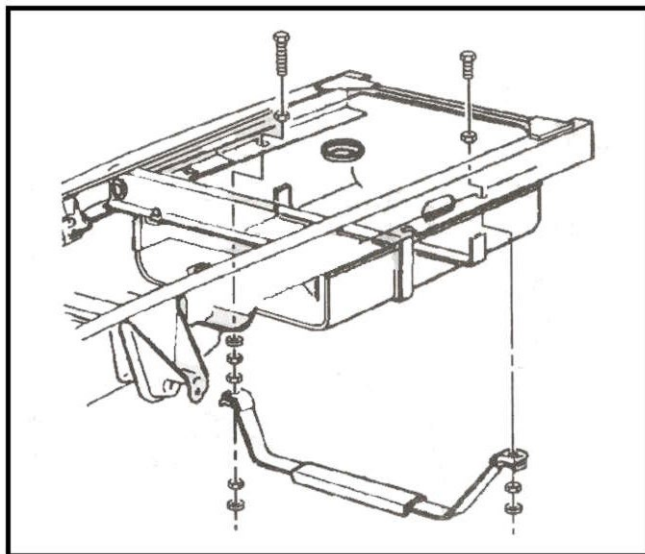
4. Drill additional holes in the rail as follows

PICTURE 2



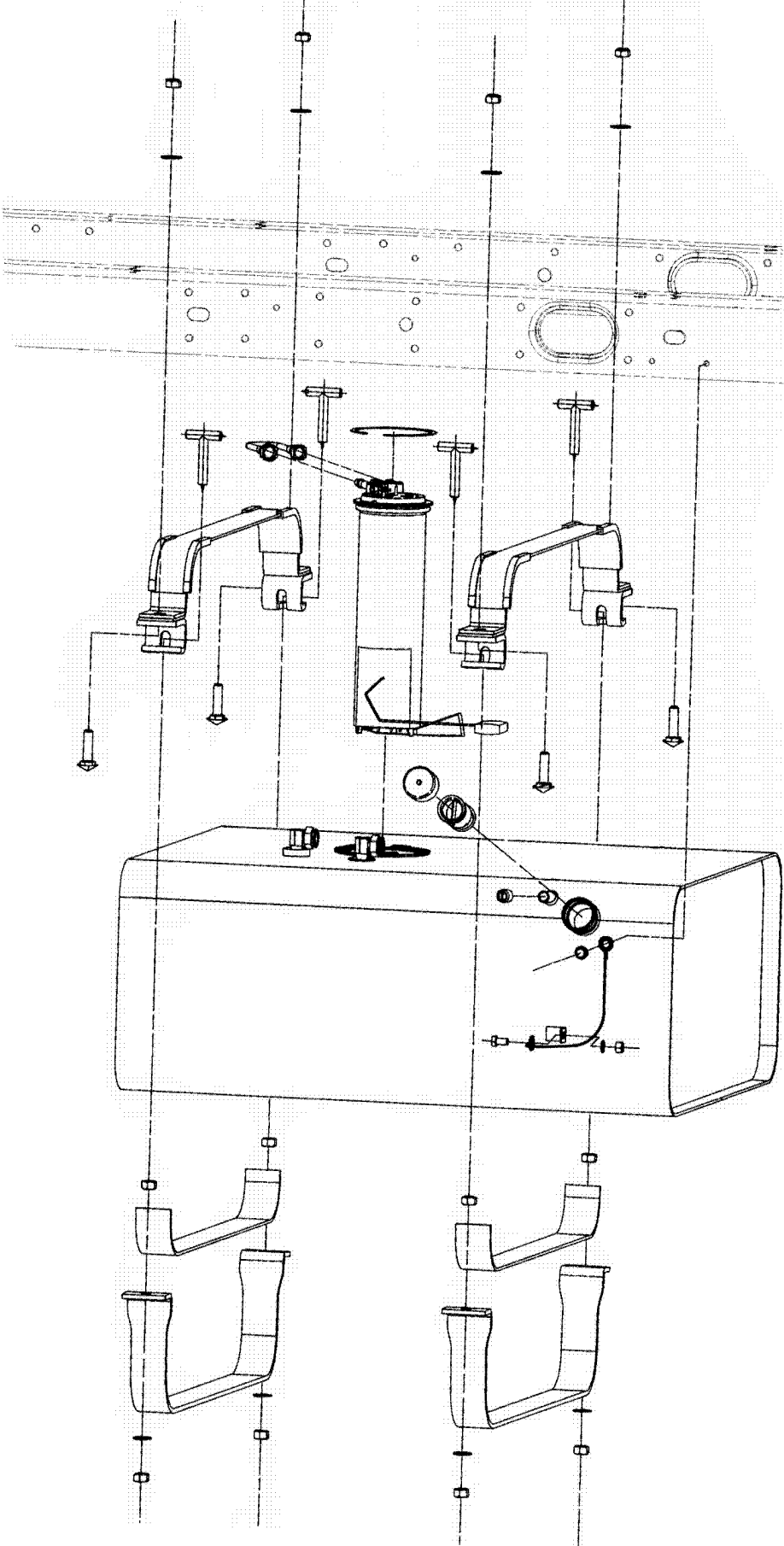
5. Fit the new cross-members supplied with the kit as shown, using the supplied new fasteners (Fit bolts from the bottom and slide nuts in between rail and body if space is a problem.).

PICTURE 3



5. Fit top strap welded assemblies (W0002842) to the bottom of the lower rail flange with nuts and bolts (9441705, 2436166, 9442939) torque to 65 ± 5 Nm.
6. Fit the t-bolts (W0002796) through the slots and turn nuts (09418828) all the way onto each t-bolt by hand.
7. Install sender unit to new tank as per service manual page 6-1629.
8. Raise new tank under the vehicle to allow reconnection of fuel lines and electrical connectors as per service manual page 6-1629. Connect fuel lines and electrical connectors.
9. Raise new tank fully ensuring equal clearance between cross-member in front of and cross member behind fuel tank.
10. Slide the bottom straps (W0002837) (these have pre-bonded insulators) onto the t-bolts and fit the nuts and washers (09418828 & 02436165) to hold these in place.
11. Torque the bottom straps lower nuts to 10 ± 1 Nm and turn the upper nuts on the t-bolt down and lock them against the straps using a torque of 65 ± 5 Nm.
12. Fit the fuel tank ground strap (W0002747) to the tab provided on the fuel tank rail ensuring a good electrical connection using fasteners 09428638, 11500417 and 00120377. Torque to 20 ± 2 Nm.
13. Fit the other end of the ground strap to the chassis rail lower flange, using bolt 11504585 and torque to 20 ± 2 Nm.

PICTURE 4



CASE 2- P22 all Wheelbases 75 Gallon.

(Refer to WCC layout drawing WL000026 where available)

1. Remove fuel tank shields as per service manual page 6-1627.
2. Disconnect battery negative cable and filler neck connections. Remove fuel tank, disconnect fuel lines and electrical connector, per service manual page 6-1627 and 6-1628.
3. Remove sender unit as per service manual page 6-1627 and 6-1628.

(See picture 1)

4. Drill additional holes in the rail as follows:

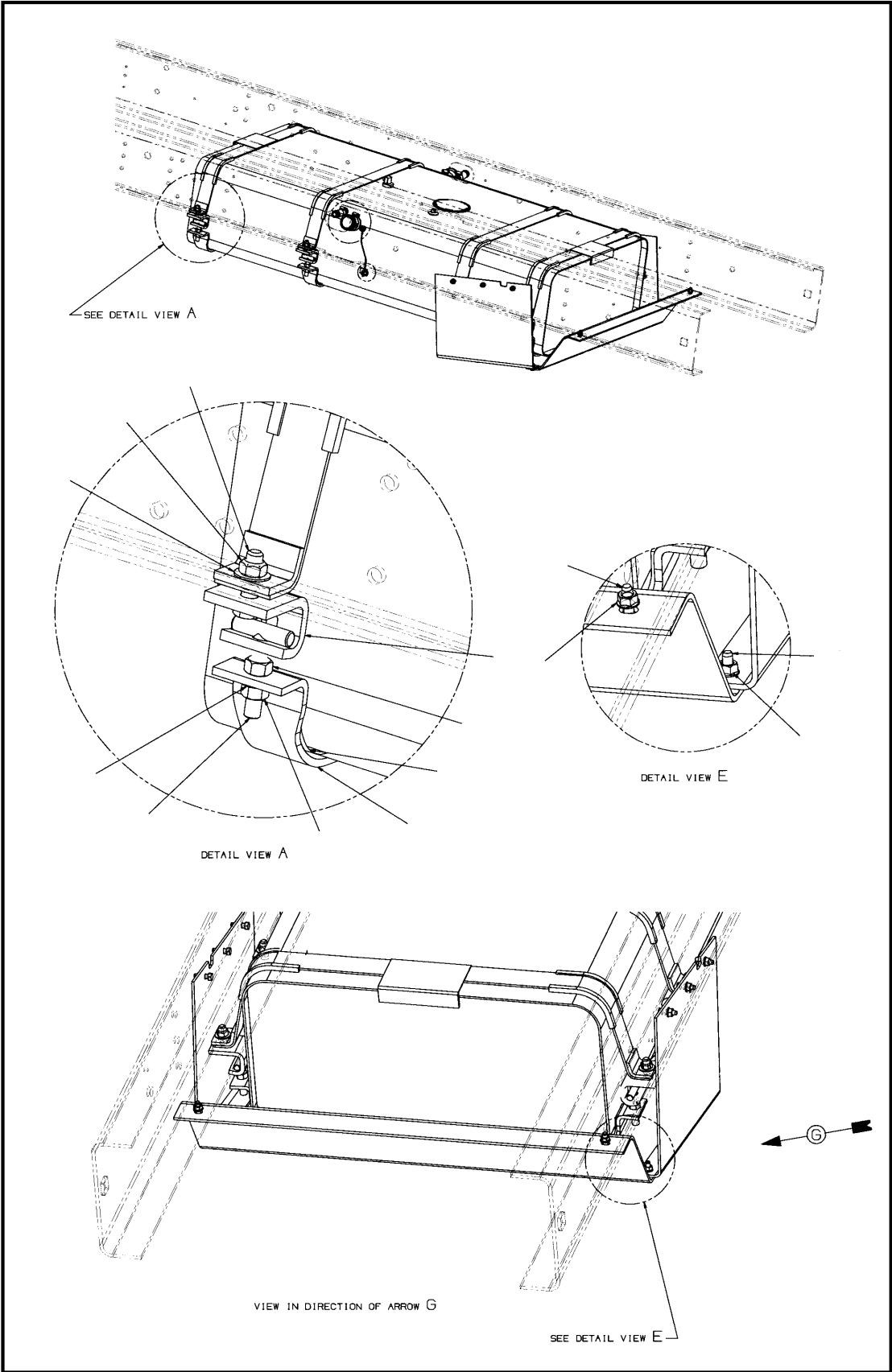
(See picture 2)

5. Fit top fuel tank strap welded assemblies (W0002846 & W0002852) to the upper (inner) face of the lower rail flange. Fit t-bolt mounting brackets (W0002838) to the bottom face of the lower rail flange, with nuts and bolts (9441705, 02436166, 09442939) passing through the top strap assembly, the chassis rail and the t-bolt mounting brackets.

Take note that the front and rear top fuel tank straps (W0002852) are equipped with tank locating tabs that must point outwards (WL000026 helps to clarify). Torque the nuts to 65 ± 5 Nm.

6. Fit the t-bolts (W0002796) through the slots and turn nuts (09418828) all the way onto each t-bolt by hand.
7. Install sender unit to new tank as per service manual page 6-1629.
8. Raise the new tank under the vehicle to allow reconnection of fuel lines and electrical connectors as per service manual page 6-1629. Connect fuel lines and electrical connectors then raise the tank fully.
9. Slide the bottom straps (W0002844)(these straps have pre-bonded insulators) onto the t-bolts and fit the nuts and washers (09418828 & 02436165) to hold the bottom straps in place.
10. Torque the bottom straps lower nuts to 10 ± 1 Nm, and run the upper nuts on the t-bolt down, locking them against the straps using a torque of 65 ± 5 Nm.
11. Fit the fuel tank ground strap (W0002747) to the tab provided on the fuel tank, ensuring a good electrical connection, with fasteners 09428638, 11500417, 00120377. Torque to 20 ± 2 Nm.
12. Fit the other end of the ground strap to the chassis rail lower flange using bolt 11504585 torque to 20 ± 2 Nm.

PICTURE 5



CASE 2- P32 all Wheelbases 60 and 75 Gallon

1. Remove fuel tank shields as per service manual page 6-1627.
2. Disconnect battery negative cable and filler neck connections. Remove fuel tank, disconnect fuel lines and electrical connector as per service manual page 6-1627 & 6-1628.
3. Remove sender unit as per service manual page 6-1627 & 6-1628.
(See picture 1)
4. Drill additional holes in the rail as follows:
(See picture 2)
5. Fit the new cross-members as supplied with the kit, as shown using new fasteners (Fit bolts from the bottom and slide nuts in between rail and body if space is a problem.)
6. Fit top fuel tank strap welded assemblies (These are part numbers W0002842, W0002853 if the chassis is not 18,000lb. If the chassis is 18,000lb use part numbers W0002850 and W0002854) (Refer to WL000026 where available) to the bottom of the lower rail flange, with nuts and bolts (9441705, 2436166, 9442939) and torque to 65 ± 5 Nm. Take note that the rear top fuel tank strap (W0002854) is equipped with a tank locating tab that must point outwards (Use layout WL000026 picture to clarify).
7. Fit the t-bolts (W0002796) through the slots and turn nuts (09418828) all the way onto each t-bolt by hand.
8. Install sender unit to new tank as per service manual page 6-1629.
9. Raise the tank under the vehicle to allow reconnection of fuel lines and electrical connectors as per service manual page 6-1629. Connect fuel lines and electrical connectors then raise the tank fully.
10. Slide the bottom straps (W0002844) (these come with pre-bonded insulators), onto the t-bolts. Fit the nuts and washers (09418828 & 02436165) to hold the bottom straps in place.
11. Torque the bottom straps lower nuts to 10 ± 1 Nm and run the upper nuts on the t-bolt down and lock them against the straps using a torque of 65 ± 5 Nm.
12. Fit the fuel tank ground strap (W0002747) to the tab provided on the fuel tank, ensuring a good electrical connection, with fasteners 09428638, 11500417, 00120377. Torque to 20 ± 2 Nm.
13. Fit the other end of the ground strap to the chassis rail lower flange, using bolt 11504585 torque to 20 ± 2 Nm.
(See picture 5).